

**modulys<sup>®</sup>**



**LITHO**

**Artcore** Collection

— Think wildly. Blend naturally.

# LITHO

modulyss®

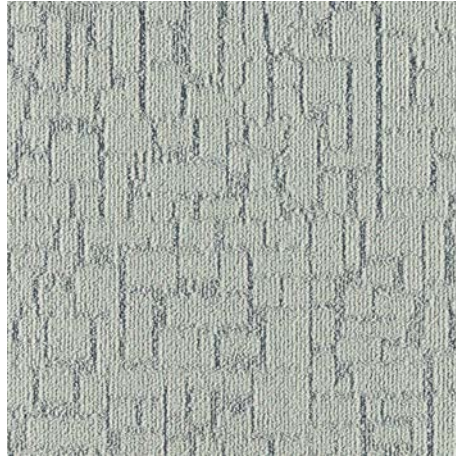




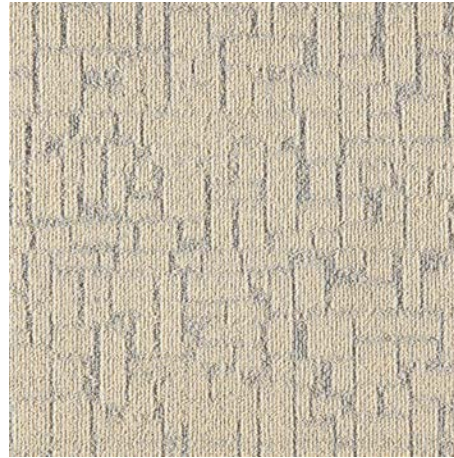
# LITHO



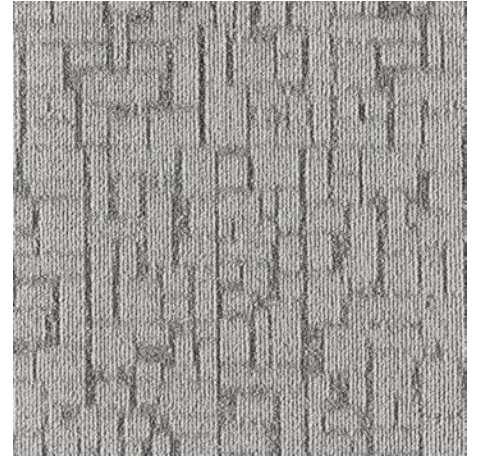
010



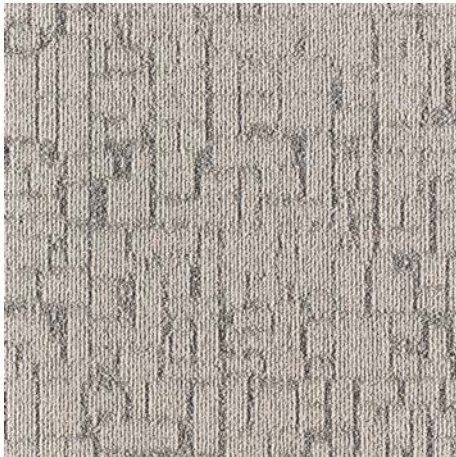
626



208



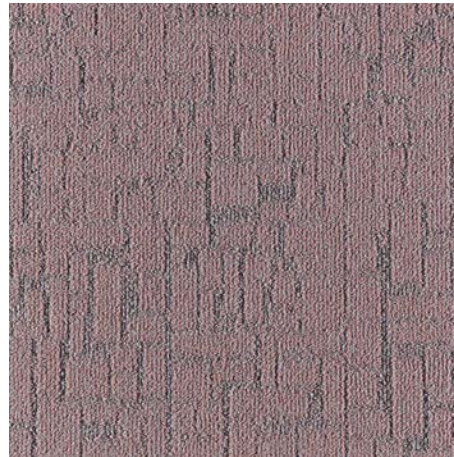
983



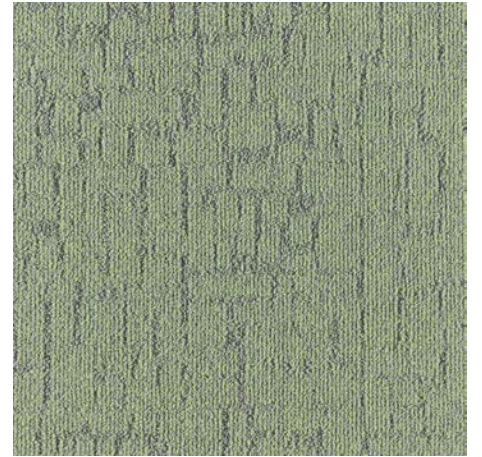
012



932



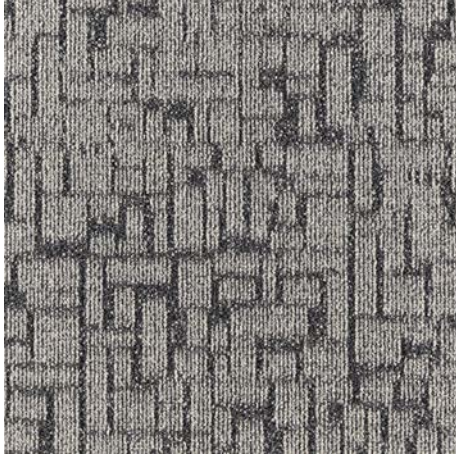
398



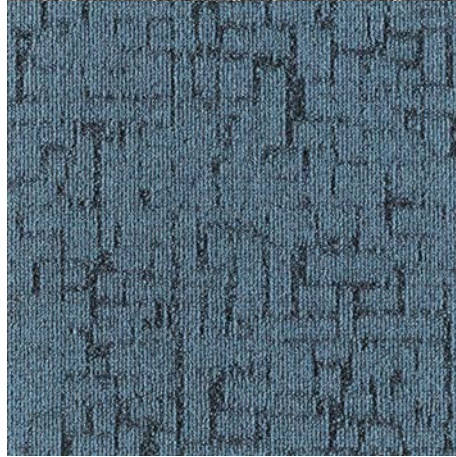
672



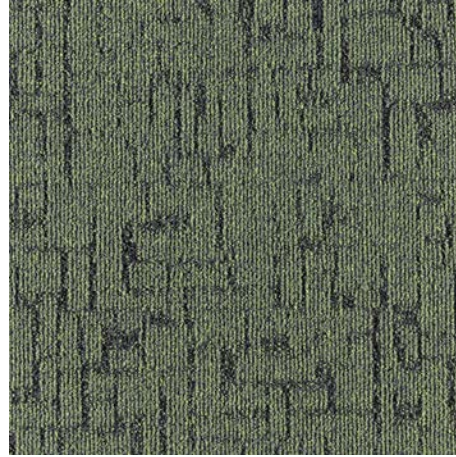
# LITHO



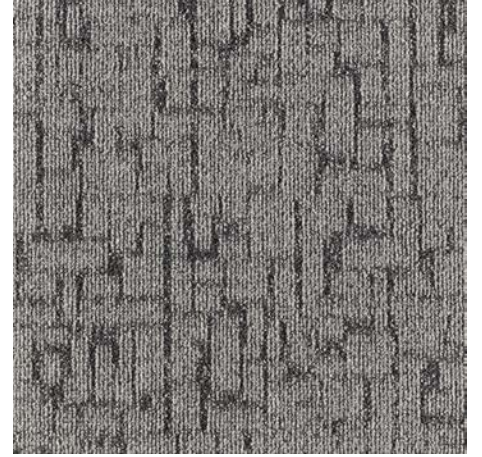
904



501



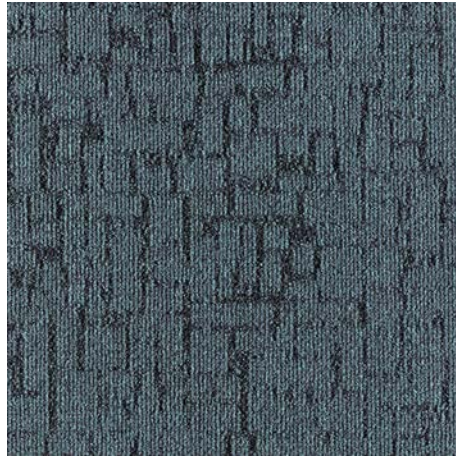
659



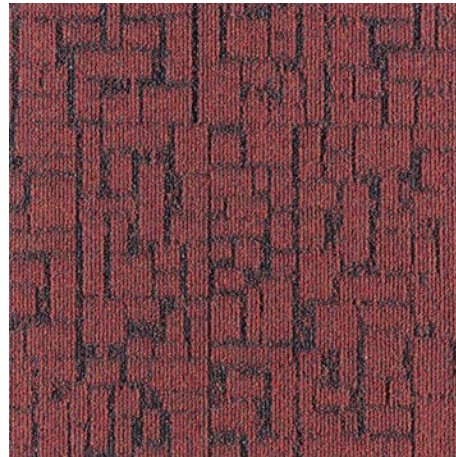
901



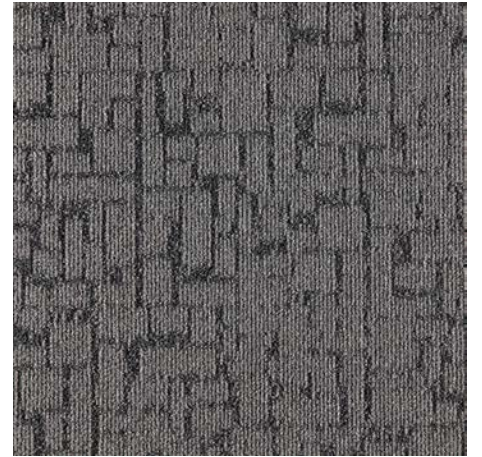
853



518



389



911

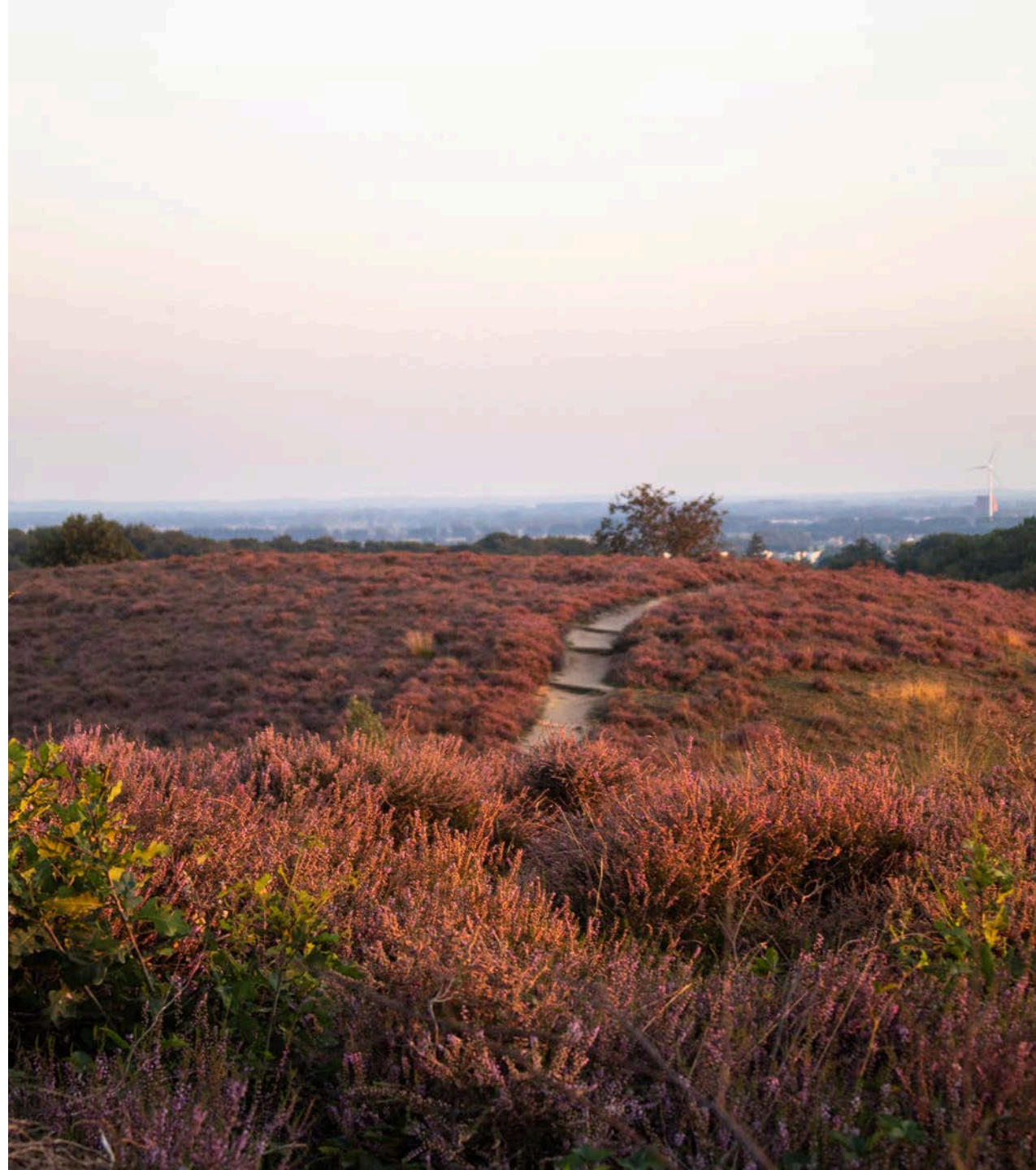


# INTRODUCING ARTCORE

## INSPIRED BY NATURE

Artcore is inspired by the **transitions seen in nature** – the space between two states, where a material or an environment changes from one thing to another.

- The way a forest turns into meadow.
- The way the city gives way to country.
- Where bark becomes covered in moss.





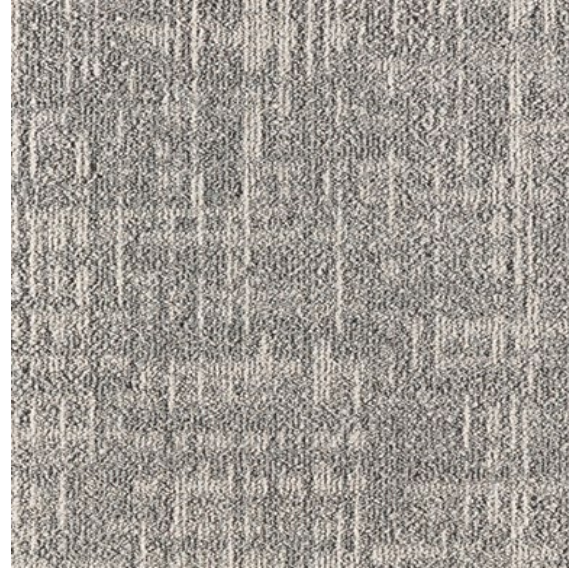
# INTRODUCING ARTCORE

ARTCORE offers an opportunity to create **unique patterned transitions** that **reconnect us with nature**, restoring **balance and wellbeing**.

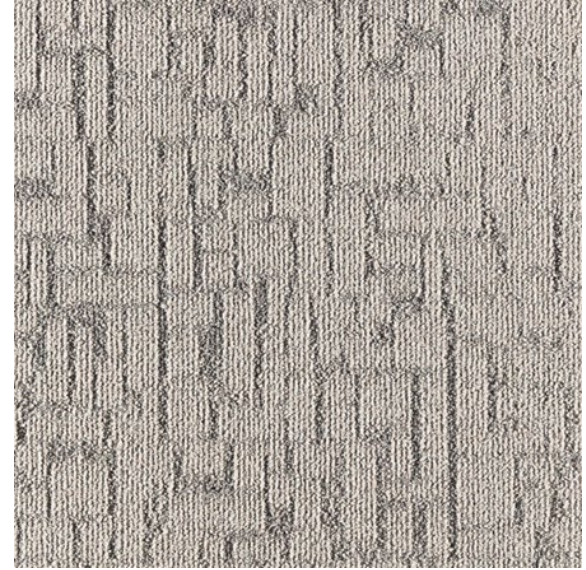
Inspired by these natural transitions and the concept of biophilic design, we have created **four patterns** to play with:

Core, Mezzo, Litho & Etch.

CORE



LITHO



ETCH



MEZZO



# ARTCORE TRANSITIONS

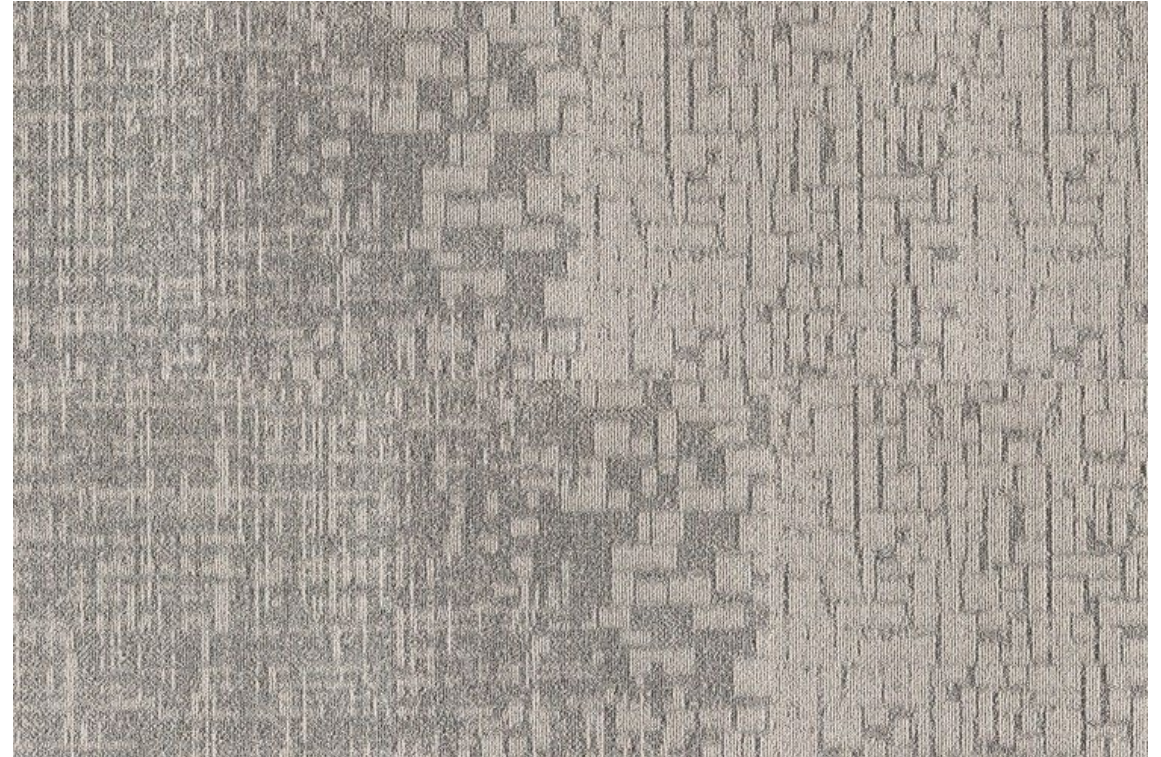
## PATTERNED TRANSITIONS

Combine the 4 distinctive patterns of the Artcore collection to make **original and creative floor collages**.

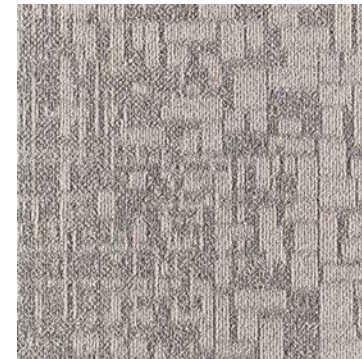
**Core** acts as the foundation of your design. **Etch**, **Litho** and **Mezzo** are three expressive designs that connect with **Core**.

Here **Core** connects with **Litho** using the transition tile: **Litho Gradient**.

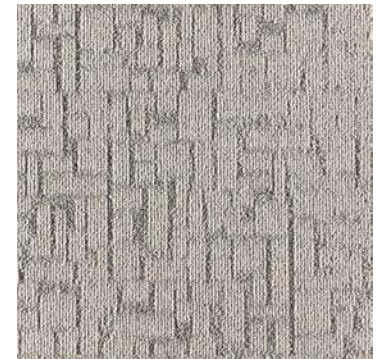
[Learn how to create, with Artcore here.](#)



Core



Litho Gradient /  
Etch Gradient / Mezzo Gradient



Litho  
Etch / Mezzo



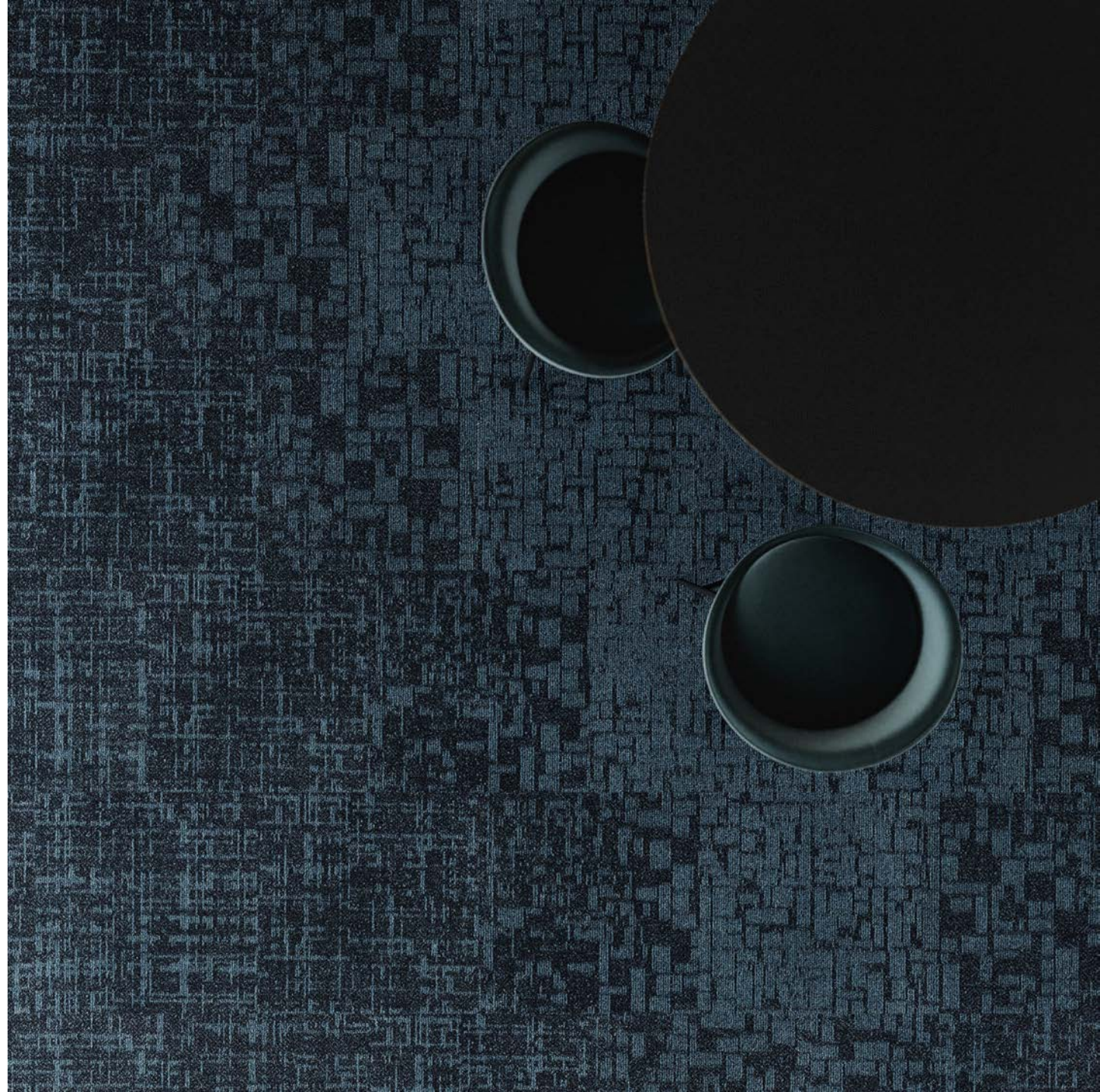
# ARTCORE COLLECTION

## LITHO

Litho is a one-of-a-kind organic pattern with its own unique biophilic ambience.

## LITHO WITH CORE

Acting as the foundation of the Artcore collection, **Core** is blended with **Litho** using the **Litho Gradient** tiles to bring a fluid organic rhythm to your floorscape.

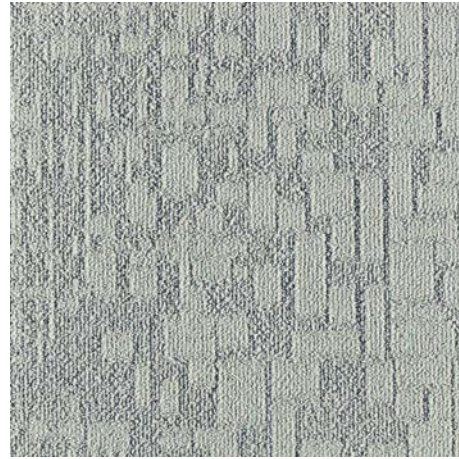




# LITHO GRADIENT



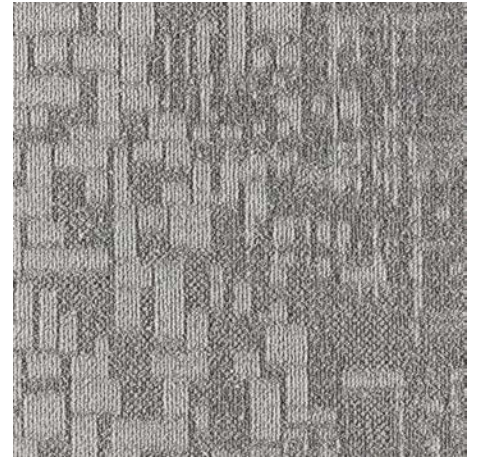
010



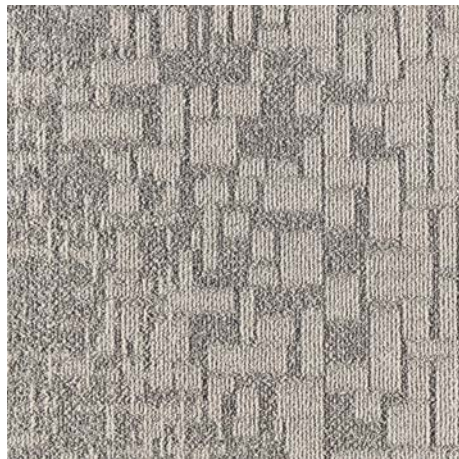
626



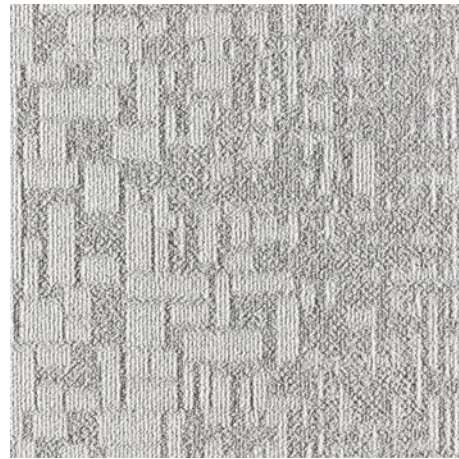
208



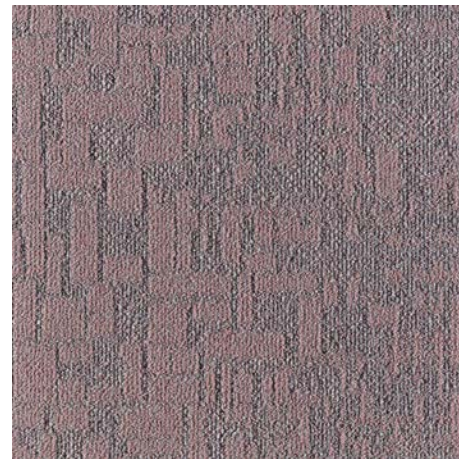
983



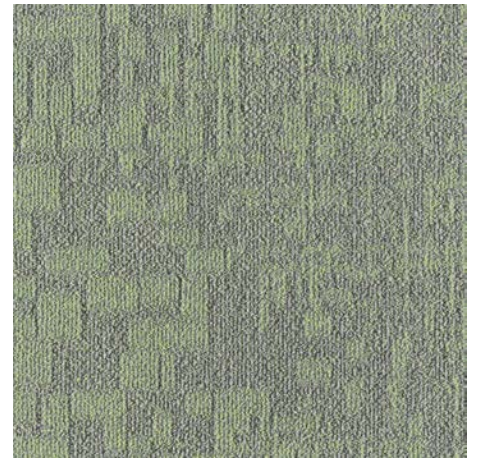
012



932



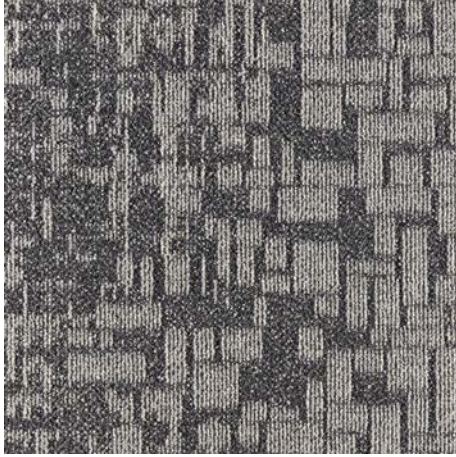
398



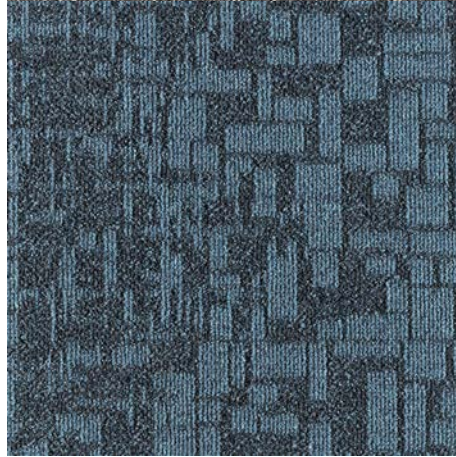
672



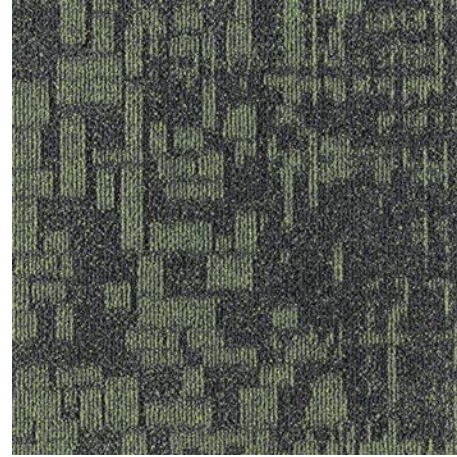
# LITHO GRADIENT



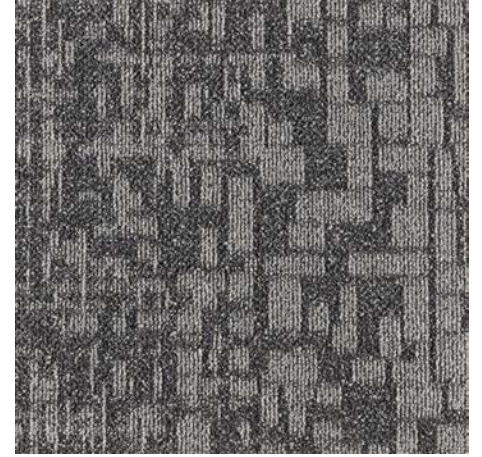
904



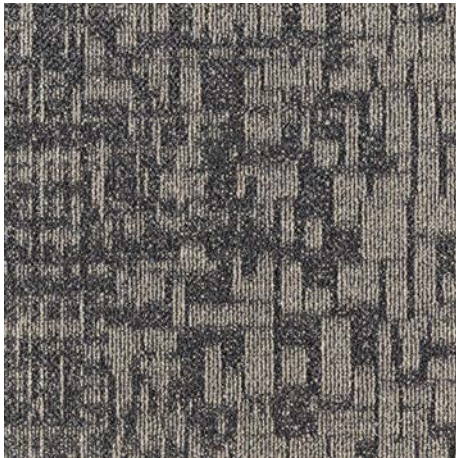
501



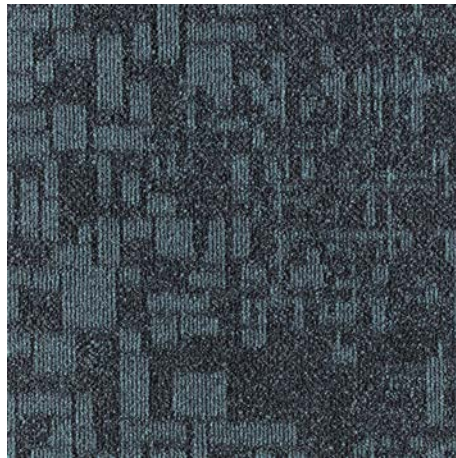
659



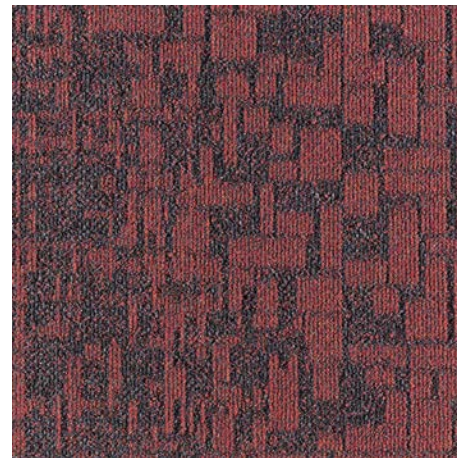
901



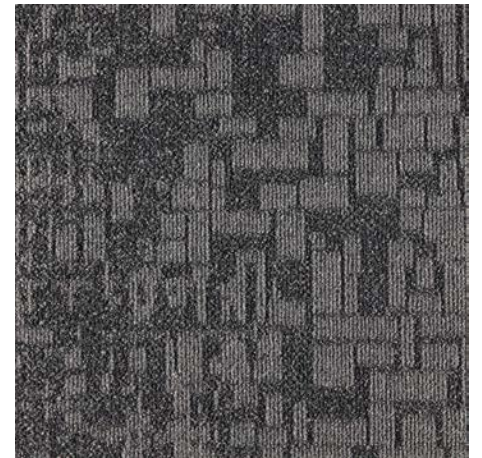
853



518



389



911



# ARTCORE WELLBEING

## COMFORT

**LITHO** helps to mitigate the effects of noise disturbance, when used in combination with **comfortBack<sup>eco</sup>** backing,

With an average improvement of 65% in impact sound absorption and 25% in absorbing noise from adjacent spaces, **comfortBack<sup>eco</sup>** makes spaces **calmer and quieter**.





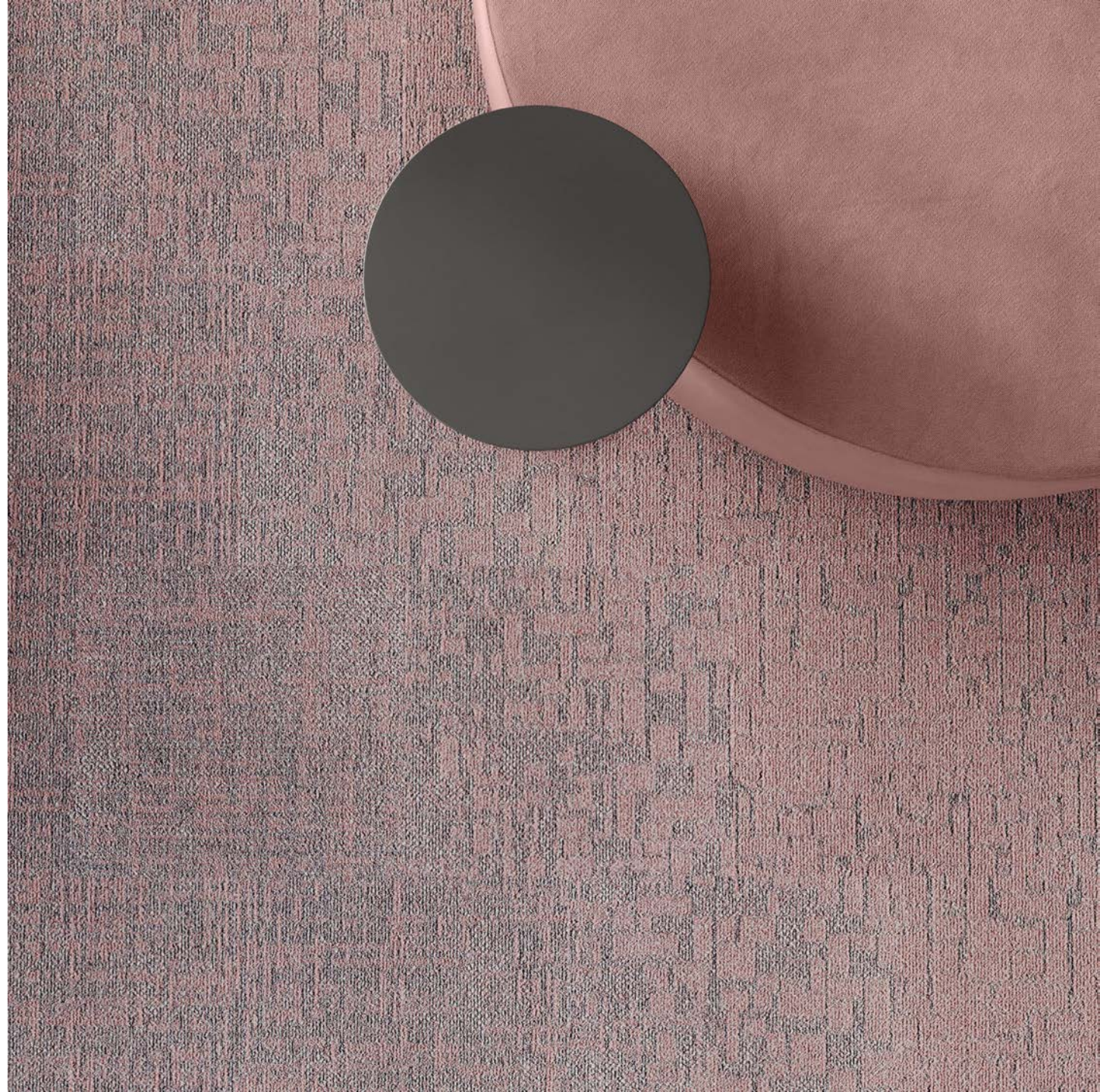
# ARTCORE SUSTAINABILITY

## THE GOLD STANDARD

The entire Artcore collection is **Cradle to Cradle Certified® Gold**, in keeping with modulyss' ambition to be at the forefront of sustainability.

To maximize their contribution to the circular economy, modulyss do this by keeping materials in use for as long as possible and by minimizing waste.

[View modulyss Cradle to Cradle](#)





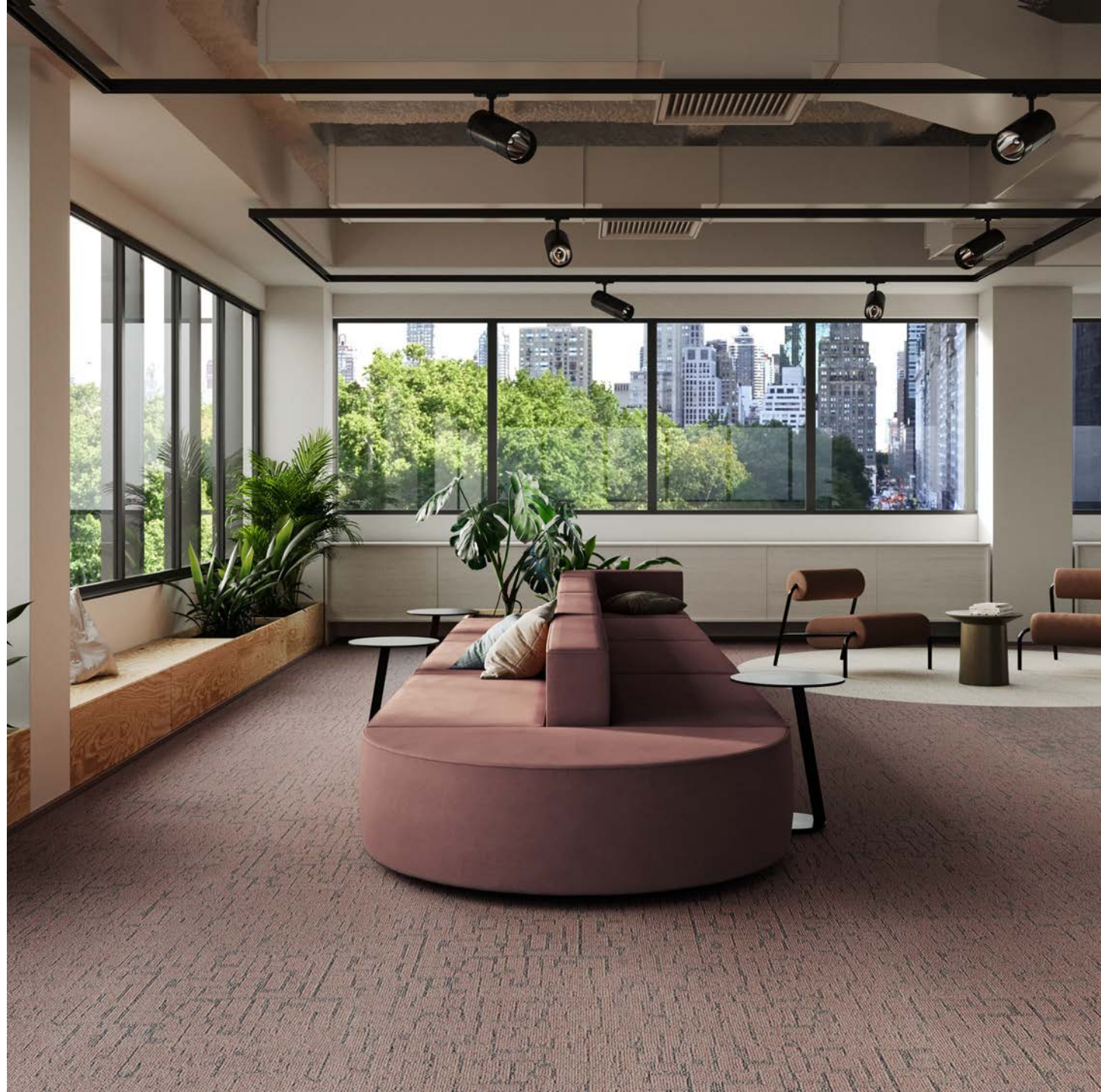
# ARTCORE SUSTAINABILITY

## A FIBRE FOR THE FUTURE

The Artcore collection is made from **100% regenerated ECONYL® nylon yarn.**

Artcore use **ecoBack** or **comfortBack<sup>eco</sup>**, 100% recyclable, Cradle to Cradle Certified® Gold backings.

Both backings are designed for the circular economy and can easily be disassembled and recycled into new backing solutions.





RECYCLED CONTENT

UP TO

64%

OVERALL RECYCLED CONTENT

100%

REGENERATED & SOLUTION DYED  
ECONYL® YARN



PRODUCT HEALTH & SUSTAINABILITY

LOW EMITTING  
PRODUCT

GUT LABEL  
CRI - GREEN LABEL PLUS



CIRCULARITY

CRADLE TO CRADLE CERTIFIED® GOLD



RECYCLABILITY

SUITED FOR REUSE AND RECYCLING

GREEN BUILDING  
CERTIFICATIONS

BREEAM, LEED, WELL, HQE

BACKING

ECOBACK

BITUMEN-FREE  
CRADLE TO CRADLE CERTIFIED® GOLD



-27.3%

WEIGHT REDUCTION  
COMPARED TO BACK2BACK

TECHNICAL

αW

0.20

SOUND ABSORPTION



UP TO

26 dB

IMPACT NOISE

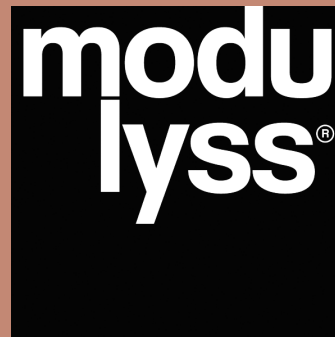


33

WEAR CLASS HEAVY  
COMMERCIAL USE







**gibbon**  
architectural